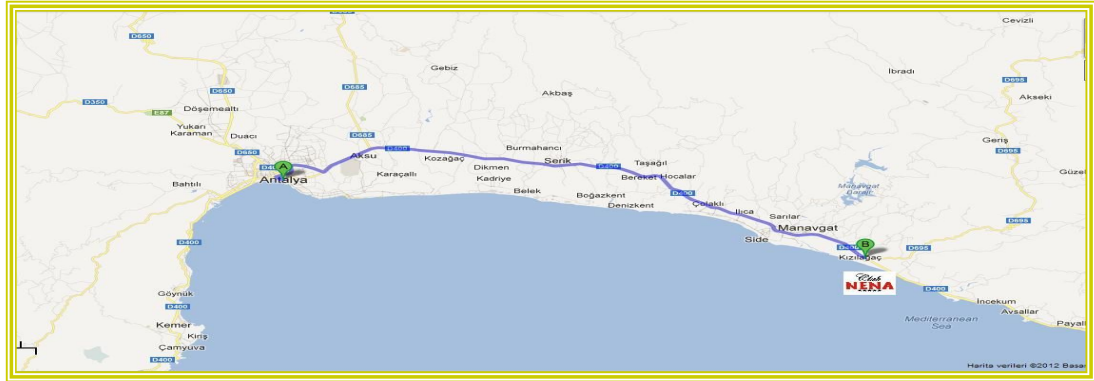


GENEL BİLGİ

Otel Adı	: CLUB NENA
Kategorisi	: 5 Yıldızlı Tatil Köyü
Kuruluş yılı	: 1997
Yeri	: Kızılağaç-Manavgat
Açılış Süresi	: 6 AY
Yenileme	: 2015 Bütün Banyolar, Televizyonlar, Aquapark, 2018 da Ana Restaurant, Sahilde Bar ve Çocuk Oyun Alanı, : 2023 Tüm Oda ve Genel Mekan Klimaları değişimi, Club tarafı balkon kapı ve pencereleri yenilenmesi, Relax Havuz yenileme, Restaurant sandalyeleri yenileme, Tüm odaların boyanması, Lobi Yenileme, Tüm Safe kasaları yenileme.
Tadilat Miktarı	:
Toplam Alan	: 98.000 m2
Toplam Oda Sayısı	: 586
Sigara İçilmeyen Oda	: 586 - Kapalı alanlarda sigara içilmemektedir.
Engelli Odası	: 7
Kapasite (pax)	: 1184
Antalya Merkeze Uzaklığı	: 80 km
Hava Alanına Uzaklığı	: 80 km
Manavgat Merkeze Uzaklığı	: 13 km
Alanya Merkeze Uzaklığı	: 45 km
Perge	: 90 km
Termessos	: 110 km
Phaselis	: 170 km
Myra	: 230 km
Aspendos	: 53 km
Side	: 15 km
Denize Uzaklığı	: 0 metre
En Yakın Hastane	: Manavgat / Özel Hastane
En Yakın Turizm Merkezi	: Kızılağaç
Konuşulan Diller	: Türkçe - İngilizce - Almanca - Rusça
Ödeme Şekli	: Visa, Master Card, Nakit
Voltaj	: 220 Volt
Kalite Belgeleri	: ISO 9001:2008 - Kalite Yönetim Belgesi : ISO 22000:2005 - Gıda Güvenliği Yönetim Sistemi : ISO 14002:2004 - Misafir Mem. / Şikayet Yön. Sis. : ISO 14001 :2012 -Çevre Yönetim Sistemi : Eco Okul : Mavi Bayrak : Çevreye duyarlı tesis Belgesi (Yeşil Yıldız) : Sıfır Atık Belgesi

Şirket Adı	: AKÇELİK TURİZM OTELCİLİK A.Ş
Vergi Dairesi	: Manavgat
Vergi Numarası	: 019 052 2884
Posta Adresi	: Kızılağaç Mahallesi Merkez Sokak No: 88 A/A Kızılağaç / Manavgat
	Antalya
Telefon Numarası	: + 90 444 56 38
Fax Numarası	: + 90 242 748 70 54
E-mail	: info@clubnena.com.tr
Web Sitesi	: www.clubnena.com.tr
Satış Mail Adresi	: sales@clubnena.com.tr
On-Line Rezervasyon	: www.clubnena.com.tr
Rezervasyon Mail	: rezervasyon@clubnena.com.tr



- Ulaşım** :
- 1- Toplu Taşıma - Manavgat merkeze giden minibüsler mevcuttur. (Saatler Belediye Tarafından Belirlenir.)
 - 2- Taksi - Otel önünde 24 saat hizmet vermektedir.
 - 3- Otel tarafından özel transfer.(Özel transfer detayları hakkında resepsiyondan bilgi alabilirsiniz.)
 - 4- Araç Kiralama - Otel içerisinde araç kiralama ofisi hizmet vermektedir.

SAHİL

Resepsiyona Uzaklığı	: 400 m.
Sahil Yapısı	: Geniş Kum , Hafif Çakıl taşlı.
Hizmetler (ücretsiz)	: Şezlong, Güneşlik, Plaj Havlusu, İskele
Hizmetler (ücretli)	: Kamelya , VIP Kamelya
Yiyecek ve içecek	: İskele Bar (Ücretli), Beach Bar , Sahilde gözleme

KONAKLAMA / ODA ÖZELLİKLERİ

Oda Tipi & Genel Bilgi	Toplam Oda	Metrekare	Kişi Konaklama Şekilleri										Havuz Manzara	Balkon	Asansör	Engelli Odası	Oturma Odası	Bağlantılı Oda	Kat	Sigara	Evcil Hayvan
			1	1+1	1+2	2	2+1	-	-	-	-	-									
Standart Oda	280	28 m ²	1	1+1	1+2	2	2+1	-	-	-	-	-	-	-	-	-	-	-	-	-	-
Ana Bina Standart Oda	166	28-30 m ²	1	1+1	1+2	2	2+1	2+2	-	-	-	-	-	-	-	-	-	-	-	-	-
Large Oda	100	30-32 m ²	1	1+1	1+2	1+3	2	2+1	2+2	3+1	4	-	-	-	-	-	-	-	-	-	-
Aile Odası	29	38 m ²	1	1+1	1+2	1+3	2	2+1	2+2	3+1	4	-	-	-	-	-	-	-	-	-	-
Suite	4	77 m ²	1	1+1	1+2	1+3	2	2+1	2+2	3+1	4	-	-	-	-	-	-	-	-	-	-
Engelli Odası (Ana Bina)	2	28 m ²	1	1+1	1+2	2	2+1	-	-	-	-	-	-	-	-	2	-	-	-	-	-
Engelli odası (Club)	5	28 m ²	1	1+1	1+2	2	2+1	-	-	-	-	-	-	-	-	5	-	-	-	-	-
Genel Toplam	586															7					

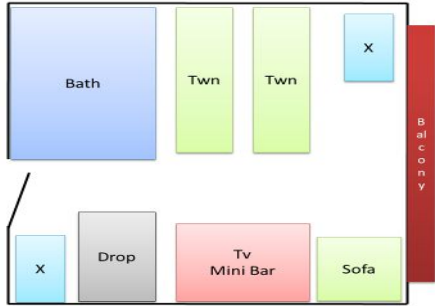
	Giriş Kapısı Genişliği	Banyo Kapısı Genişliği	Banyo Tutacağı	Küvet	Duş	Koridor Genişliği	Metrekare
Engelli Odası (Club)	92 cm	83 cm	✓	No	✓	144 cm	28 m ²

	Giriş Kapısı Genişliği	Banyo Kapısı Genişliği	Banyo Tutacağı	Küvet	Duş	Koridor Genişliği	Metrekare
Engelli Odası (Otel)	95 cm	83 cm	✓	No	✓	110 cm	28 m ²

Oda Konfor ve Özellikleri	Oda Konfor ve Özellikleri																			
	Ara Kapı	Paravan	Seramik	Çift Kişilik Yatak	Tek Kişilik Yatak	Ekstra Yatak	Duş	Saç Kurutma Makinası	Telefon - Direk Dış Hat	TV - LED	Müzik Kanalları TV de	Uydu Kanalları	Kablosuz İnternet	220V Elektrik	Minibar	Split Klima	Havuz Manzara	Bahçe Manzara	Güvenlik Kasası	Laminat
Club Standart Oda	-	-	✓	-	✓	✓	✓	✓	✓	✓	✓	✓	✓	✓	✓	✓	✓	✓	✓	✓
Anabina Standart Oda	-	-	✓	-	✓	✓	✓	✓	✓	✓	✓	✓	✓	✓	✓	✓	✓	✓	✓	✓
Large Oda Paravanlı	-	✓	-	-	✓	-	✓	✓	✓	✓	✓	✓	✓	✓	✓	✓	✓	✓	✓	✓
Aile Odası	✓	-	-	✓	✓	-	✓	✓	✓	✓	✓	✓	✓	✓	✓	✓	✓	✓	✓	✓
Suite Oda	-	-	✓	-	✓	✓	✓	✓	✓	✓	✓	✓	✓	✓	✓	✓	✓	✓	✓	✓
Engelli Odası (Ana Bina)	-	-	✓	-	✓	✓	✓	✓	✓	✓	✓	✓	✓	✓	✓	✓	✓	✓	✓	✓
Engelli odası (Club)	-	-	-	-	✓	✓	✓	✓	✓	✓	✓	✓	✓	✓	✓	✓	✓	✓	✓	✓

ODA ÇEŞİTLERİ

Standard Room (28 M2)



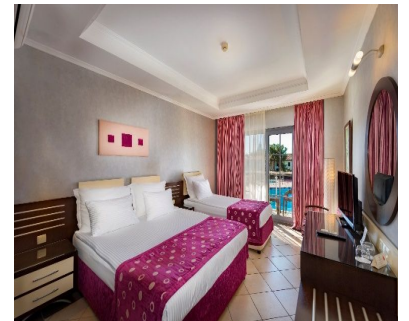
Accommodation	
Accm.Type 1	1 Adlt.
Accm.Type 2	1 Adlt. + 1 Child (0 - 8,99)
Accm.Type 3	1 Adlt. + 2 Child (0-2.99)-(0-8,99)
Accm.Type 4	1 Adlt + 2 Child (0-8.99)-(0-8.99)
Accm.Type 5	1 Adlt. + 2 Child (0 - 8.99)-(9-11,99)
Accm.Type 6	1 Adlt + 2 Child (9-11.99)-(9-11.99)
Accm Type 7	2 Adlt + 1 Child (0-8.99)
Accm Typ 8	2 Adlt + 1 Chld (9-11.99)
Accm Typ 9	3 Adlt



Standard Hotel Room(30 M2)

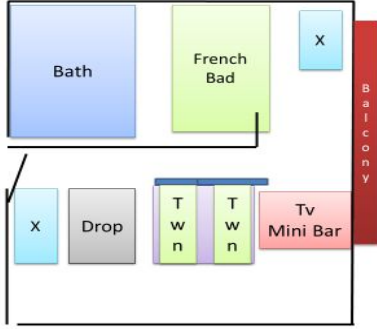


Accommodation	
Accm.Type 1	1 Adlt.
Accm.Type 2	1 Adlt. + 1 Child (0 - 8,99)
Accm.Type 3	1 Adlt. + 2 Child (0-2.99)-(0-8,99)
Accm.Type 4	1 Adlt + 2 Child (0-8.99)-(0-8.99)
Accm.Type 5	1 Adlt. + 2 Child (0 - 8.99)-(9-11,99)
Accm.Type 6	1 Adlt + 2 Child (9-11.99)-(9-11.99)
Accm Type 7	2 Adlt + 1 Child (0-8.99)
Accm Typ 8	2 Adlt + 1 Chld (9-11.99)



Accm Typ 9	3 Adit
------------	--------

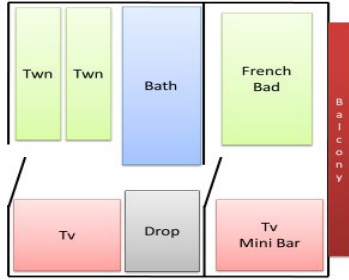
Large Room (32 M2)



Accommodation	
Accm.Type 1	2 Adit.
Accm.Type 2	2 Adit. + 1 Child (0 - 8,99)
Accm.Type 3	2 Adit. + 2 Child (0 - 8,99)-(0-8,99)
Accm.Type 4	2 Adit. + 2 Child (0 - 8,99)-(9-11,99)
Accm.Type 5	2 Adit. + 2 Child (9 - 11,99)-(9-11,99)
Accm.Type 6	3 Adit.
Accm.Type 7	3 Adit. + 1 Child (0 - 8,99)
Accm.Type 8	3 Adit. + 2 Child (0 - 2,99)-(0-8,99)
Accm.Type 9	3 Adit. + 1 Child (9 - 11,99)
Accm.Type 10	4 Adit



Family Room (38 M2)



Accommodation	
Accm.Type 1	2 Adit.
Accm.Type 2	2 Adit. + 1 Child (0 - 8,99)
Accm.Type 3	2 Adit. + 1 Child (9 - 11,99)
Accm.Type 4	2 Adit. + 2 Child (0 - 8,99)-(0-8,99)
Accm.Type 5	2 Adit + 2 Child (0-8,99)-(9-11,99)
Accm.Type 6	2 Adit. + 2 Child (9 - 11,99)-(9-11,99)
Accm.Type 7	3 Adit. + 1 Child (0 - 8,99)
Accm.Type 8	3 Adit. + 2 Child (0-2,99)-(0-8,99)
Accm.Type 9	3 Adit. + 1 Child (9 - 11,99)
Accm.Type 10	4 Adit.



KONAKLAMA / KAT HİZMETLERİ

Oda Giriş Çıkış	Oda Girişi Saat 14:00 dan sonra. - Oda Çıkışı Saat 12:00
Oda Temizliği	Hergün, 09:00 - 16:30 saatleri arasında,
Havlu Değişimi	Hergün
Çarşaf ve pike değişimi	Üç Günde Bir Kez

AKTİVİTELER VE DETAYLAR

HAVUZLAR	Çocuk Havuzuna	Adet	Derinlik	Alan	Su Kavdırma	Şezlong Minder	Şemsiye	Havlu	Günlük Hijyen
Relax Havuz	✓	1	140 - 130 cm	400 m2	-	✓	✓	✓	✓
Relax Çocuk Havuzu	✓	1	40 cm	16 m2	-	✓	✓	✓	✓
Aktivite Havuzu	✓	1	140-130 cm	1000 m2	-	✓	✓	✓	✓
Mini Kulüp Havuzu	✓	1	40 cm	160 m2	1	✓	✓	✓	✓
Aquapark Havuzu	✓	1	120 cm	168 m2	9	✓	✓	✓	✓
Aquapark Çocuk Havuzu	✓	1	35-50 cm	196 m2	2	✓	✓	✓	✓

Diğer Hizmet ve Aktiviteler	✓ Tüm Gün Animasyon	✓ Fitness Merkezi (18 yaş itibarı)
	✓ Gece Showları	(spor kıyafeti ve spor ayakkabı zorunlu)
	✓ 1 Adet Tenis Kortu (sert zemin)	✓ Türk Hamamı
	✓ Tenis Kortları Aydınlatma (Ücretli)	✓ Sauna
	✓ Tenis Raketleri ve Topları	✓ Masaj Çeşitleri (Ücretli)
	✓ Basketbol	✓ Su Kaydırakları (Belirli Saatlerde)
	✓ Sahil Voleybolu	✓ Alışveriş Merkezleri
	✓ Masa Tenisi	* Kuaför
	✓ Dart	* Derici
	✓ Bocca	* Market
	✓ Su Sporları (Ücretli) (Özel İşletme)	* Hediyelik Eşya
	✓ Rüzgar Sörfü (Lisanslı) (Ücretli) (Özel İşletme)	* Fotoğrafçı
	✓ Anfi tiyatro	* Araç Kiralama Servisi
	✓ Step/Aerobik	* Butik

- ✓ Mini Golf
- ✓ Disko (İçecekler ücretli)
- ✓ Mini Kulüp (4-12 yaş)
- ✓ Çocuk Büfesi
- ✓ Çocuk Oyun Alanları (Bahçede ve Sahilde Üstü Kapalı)
- ✓ Bebek Köşesi (Mikrodalga,Biberon Isıtıcısı, Mikser)
- ✓ İskele ve Pavillonlar 01.06-15.10
- ✓ Okçuluk
- ✓ Doktor & Sağlık Hizmetleri (ücretli)
- ✓ Kütüphane
- ✓ Asansör
- ✓ Döviz Bozdurma
- ✓ Çamaşırhane Servisi (ücretli)
- ✓ Araç Park Alanı

TOPLANTI SALONLARI & TEKNİK EKİPMANLAR

SALONLAR & BOYUTLARI	Genişlik	Uzunluk	Yükseklik	Alan M ²	Tiyatro	Sınıf	Kokteyl	Banket	U Düzeni	Fuaye
TV SALONU	15 m	15 m	3.50 m	225 m ²	-	-	-	-	-	-
TOPLANTI SALONU	15 m	15 m	3.50 m	225 m ²	-	-	-	-	-	-

Note: Toplantı Ekipmanlar Ücretlidir.

Ekipmanlar	Ölçü	Adet
1- Projeksiyon		2
2- Motorlu Sabit Perde	3 x 2	1
3- DVD Player		2
4- Kablosuz Mikrofon		2
5- Ses Sistemi		1
6- Işık Sistemi		1
7- Kûrsü		1

RESTORANLAR & BARLAR

	Toplam Kapasite	Açık alan	Kapalı alan	Konsept İçeceği	Açık Büfe	A'La Carte	Klima	Çocuk Menüleri	Diet Menü	Bebek koltuğu	Rezervasyon	Ücretsiz	Ücretli	Haftalık Gün Sayısı	Operasyon Saatleri	Tema
** Ana Restoran	1250															ULUSLARASI
Kahvaltı		✓	✓	✓	✓	✓	✓	✓	✓	✓	✓	✓	✓	7	07:00 - 10:00	
Geç Kahvaltı		✓	✓	✓	✓	✓	✓	✓	✓	✓	✓	✓	✓	7	10:00 - 11:00	
Öğle Yemeği		✓	✓	✓	✓	✓	✓	✓	✓	✓	✓	✓	✓	7	12:30 - 14:30	
Snack		✓	✓	✓	✓	✓	✓	✓	✓	✓	✓	✓	✓	7	12:00 - 16:00	
Pasta Saati		✓	✓	✓	✓	✓	✓	✓	✓	✓	✓	✓	✓	7	16:00 - 18:00	
Akşam Yemeği		✓	✓	✓	✓	✓	✓	✓	✓	✓	✓	✓	✓	7	19:00 - 21:00	
Gece Çorba&Snack		✓	✓	✓	✓	✓	✓	✓	✓	✓	✓	✓	✓	7	23:00 - 02:00	
Erken Kahvaltı		✓	✓	✓	✓	✓	✓	✓	✓	✓	✓	✓	✓	7	02:00 - 07:00	
A'la Carte Restoranlar	125															
*Balık Restoran	25	✓	✓	✓	✓	✓	✓	✓	✓	✓	✓	✓	✓	6	19:30 - 21:30	BALIK
*İtalyan Restoran	50	✓	✓	✓	✓	✓	✓	✓	✓	✓	✓	✓	✓	6	19:30 - 21:30	İTALYAN
*Osmanlı Restoran	50	✓	✓	✓	✓	✓	✓	✓	✓	✓	✓	✓	✓	6	19:30 - 21:30	OSMANLI
Çocuk Büfesi (Mini Club ve Ana restaurantta)																
Öğle Yemeği Mini Club		✓	✓	✓	✓	✓	✓	✓	✓	✓	✓	✓	✓	7	12:00-13:00	
Akşam Yemeği Ana Restaurant		✓	✓	✓	✓	✓	✓	✓	✓	✓	✓	✓	✓	7	18:30-21:00	
Barlar																
Relax Bar		✓	✓	✓	✓	✓	✓	✓	✓	✓	✓	✓	✓	7	10:00-17:00	
Green Bar		✓	✓	✓	✓	✓	✓	✓	✓	✓	✓	✓	✓	7	12:00-16:00	
Sultan Köşkü		✓	✓	✓	✓	✓	✓	✓	✓	✓	✓	✓	✓	7	10:00-23:30	
Pool Bar		✓	✓	✓	✓	✓	✓	✓	✓	✓	✓	✓	✓	7	10:00-24:00	
Welcome Bar		✓	✓	✓	✓	✓	✓	✓	✓	✓	✓	✓	✓	7	10:00-24:00	
Disco Bar		✓	✓	✓	✓	✓	✓	✓	✓	✓	✓	✓	✓	7	00:00-02:00	
Aqua Bar		✓	✓	✓	✓	✓	✓	✓	✓	✓	✓	✓	✓	7	10:00-17:30	
Beach Bar		✓	✓	✓	✓	✓	✓	✓	✓	✓	✓	✓	✓	7	10:00-18:00	

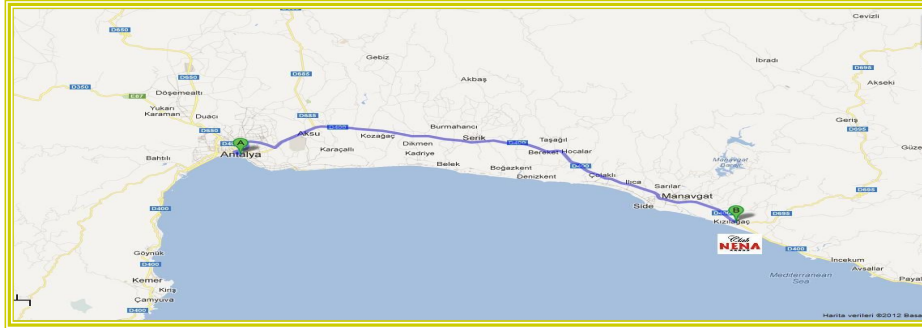
➡ Tüm alkollü içecekler 18 yaş altına verilmemektedir

Önemli Not !!!

➡ Yönetim, sezon içerisinde gelişebilecek ani koşullar nedeniyle (hava koşulları, misafir talepleri ve her türlü force major durum) önceden bilgi vermeksizin hizmet zamanlarında ve yerlerinde değişiklik yapma veya hizmeti iptal etme hakkını saklı tutar.

GENERAL INFORMATION

Name of the Hotel	: CLUB NENA	Company Name	: AKCELIK TURIZM OTELCILIK A.Ş
Category	: 5 Star Holiday Village	TAX OFFICE	: Manavgat
Foundation Year	: 1997	TAX NUMBER	: 019 052 2884
Location	: Kızılağaç-Manavgat		: Kızılağaç Mahallesi Merkez Sokak
Opening Period	: 6 Months		No: 88 A/A Kızılağaç / Manavgat
Renovation	: 2015 Bungalow bathroom, TV, Aquapark investment, 2018 Main Restaurant, Beach Bar, Children Play Ground, Internet : 2023 All Room and General Area Air Conditioners replacement, Club side balcony doors and windows renewal, Relax Pool renovation, Restaurant chairs renewal, All rooms painted, Lobby Renovation, All Safe boxes renewed	Postal Address	: Antalya
Renovation Amount	:	Phone Number	: + 90 242 748 70 70
Total Area	: 98.000 m2	Fax Number	: + 90 242 748 70 54
Total Room Number	: 586	E-mail	: info@clubnena.com.tr
Non Smoking Room	: 586 (Smoking in public places is not allowed)	Website	: www.clubnena.com.tr
Disabled Room	: 7	Mail (Sales)	: sales@clubnena.com.tr
Total Capacity (Pax)	: 1184	On-Line Reservation	: www.clubnena.com.tr
Distance from Antalya Cnt.	: 80 km	Mail (Reservation)	: rezervasyon@clubnena.com.tr
Distance from Airport	: 80 km		
Distance from Manavgat Cnt.	: 13 km		
Distance from Alanya Cnt.	: 45 km		
Perge	: 90 km		
Termessos	: 110 km		
Phaselis	: 170 km		
Myra	: 230 km		
Aspendon	: 53 km		
Side	: 15 km		
Distance to the Beach / Sea	: 0 metre		
Nearest Hospital	: Private Hospital in Manavgat		
Nearest Tourism Center	: Kızılağaç		
Language	: Turkish - English - German - Russian		
Type of Payment	: Visa, Master Card, Cash		
Voltage	: 220 Volt		
Quality Documents	: ISO 9001:2008 - Qualitätszertifikat		
	: ISO 22000:2005 - Food Safety Management Certificate		
	: ISO 10002:2004 - Customer Satisfaction & Complain Management Certificate		
	: ISO 14001 :2012 - Environment Management System Certificate		
	: Eco School		
	: Blue Flag		
	: Green Star (Environment Awareness Certificate)		
	: Zero waste		



- Transportation**
- 1- Public Transport - Minibus (Dolmuş) to the center of Manavgat. (Hours are determined by the municipality)
 - 2- Taxi - 24 hours / in front of the hotel
 - 3- Private Transportation by Hotel (You can get information from hotel)
 - 4- Car Rental Office - (Available in the Hotel)

BEACH

Distance to Beach from Reception	: 400 m
Beach (Structure)	: Sand and pebble
Facilities (free of charge)	: Sunbeds, umbrellas, beach-towels, pier
Facilities (With charge)	: Pavillon, VIP Pavillion
Food and Drink	: Pier Bar (with charge), Beach Bar (Free of charge) Turkish Gözleme

ACCOMODATIATION & ROOM FURNISHING

Room Type & General Information	Total Rooms	Size	Accommodation										Direct Sea View	Land View	Pool View	Balcony	Elevator	Handicap Room	Living Room	Connecting Room	Floor	Cigarette	Pets
			1	1+1	1+2	2	2+1	-	-	-	-	-											
Standart Room	281	28 m ²	1	1+1	1+2	2	2+1	-	-	-	-	-	-	-	-	-	-	-	-	-	2	-	-
Hotel Standart Room	166	30 m ²	1	1+1	1+2	2	2+1	-	-	-	-	-	-	-	-	-	-	-	-	-	3	-	-
Large Room	100	32 m ²	1	1+1	1+2	1+3	2	2+1	2+2	3+1	4	-	-	-	-	-	-	-	-	-	2	-	-
Family Room	32	38 m ²	1	1+1	1+2	1+3	2	2+1	2+2	3+1	4	-	-	-	-	-	-	-	-	-	2	-	-
Handicap Room (Main House)	2	28 m ²	1	1+1	1+2	2	2+1	-	-	-	-	-	-	-	-	-	-	-	-	-	0	-	-
Handicap Room (Club)	5	28 m ²	1	1+1	1+2	2	2+1	-	-	-	-	-	-	-	-	-	-	-	-	-	0	-	-
Total	585																						

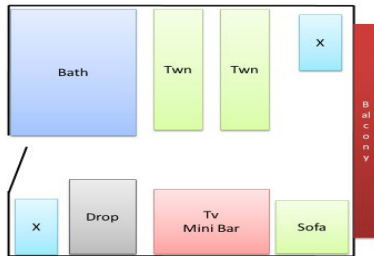
	Door Width (Entrance)	Door Width (Bathroom)	Handholds	Bathtub	Shower	Corridor Width in the Room	Size
Handicap Room (Club)	92 cm	83 cm	✓	No	✓	144 cm	28 m ²

	Door Width (Entrance)	Door Width (Bathroom)	Handholds	Bathtub	Shower	Corridor Width in the Room	Size
Handicap Room (Main House)	95 cm	83 cm	✓	No	✓	110 cm	28 m ²

Room Facilities & Amenities	Room Amenities																						
	Connecting Door	Optical Separation	Tiles	Frenchbett	Twinbed	Extra Bed	Shower	Bathtub	Hair Dryer	Direct dial Phone	TV - Plasma	Music Station	SAT - TV	Wireless	220V power supply	Minibar	Split Air Conditioning	Pool View	Land View	Side Sea View	Safe	Laminate	
Standard Room	-	-	-	-	-	-	-	-	-	-	-	-	-	-	-	-	-	-	-	-	-	-	-
Hotel Standard Room	-	-	✓	-	-	-	-	-	-	-	-	-	-	-	-	-	-	-	-	-	-	-	-
Large Room with seperation (upstairs)	-	✓	-	-	-	-	-	-	-	-	-	-	-	-	-	-	-	-	-	-	-	-	-
Family Room (with 2 rooms)	✓	-	-	-	-	-	-	-	-	-	-	-	-	-	-	-	-	-	-	-	-	-	-
Handicap Room (Main House)	-	-	✓	-	-	-	-	-	-	-	-	-	-	-	-	-	-	-	-	-	-	-	-
Handicap Room (Club)	-	-	-	-	-	-	-	-	-	-	-	-	-	-	-	-	-	-	-	-	-	-	-

ROOM VARIETY

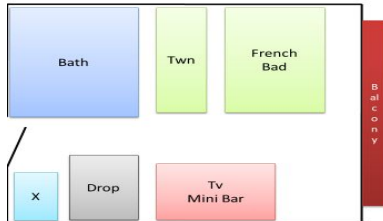
Standard Room (28 M2)



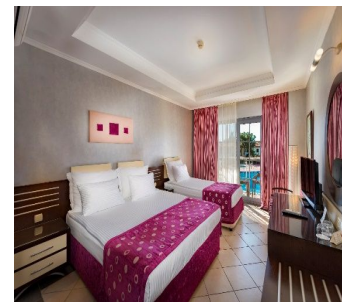
Accommodation	
Accm.Type 1	1 Adlt.
Accm.Type 2	1 Adlt. + 1 Child (0 - 8,99)
Accm.Type 3	1 Adlt. + 2 Child (0-2.99)-(0-8,99)
Accm.Type 4	1 Adlt + 2 Child (0-8.99)-(0-8.99)
Accm.Type 5	1 Adlt. + 2 Child (0 - 8.99)-(9-11,99)
Accm.Type 6	1 Adlt + 2 Child (9-11.99)-(9-11.99)
Accm Type 7	2 Adlt + 1 Child (0-8.99)
Accm Typ 8	2 Adlt + 1 Chld (9-11.99)
Accm Typ 9	3 Adlt



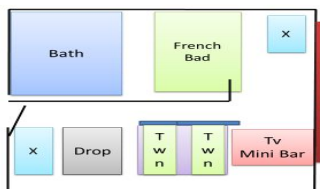
Standard Hotel Room(30 M2)



Accommodation	
Accm.Type 1	1 Adlt.
Accm.Type 2	1 Adlt. + 1 Child (0 - 8,99)
Accm.Type 3	1 Adlt. + 2 Child (0-2.99)-(0-8,99)
Accm.Type 4	1 Adlt + 2 Child (0-8.99)-(0-8.99)
Accm.Type 5	1 Adlt. + 2 Child (0 - 8.99)-(9-11,99)
Accm.Type 6	1 Adlt + 2 Child (9-11.99)-(9-11.99)
Accm Type 7	2 Adlt + 1 Child (0-8.99)
Accm Typ 8	2 Adlt + 1 Chld (9-11.99)
Accm Typ 9	3 Adlt



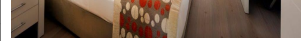
Large Room (32 M2)



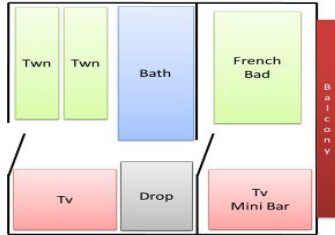
Accommodation	
Accm.Type 1	2 Adlt.
Accm.Type 2	2 Adlt. + 1 Child (0 - 8,99)
Accm.Type 3	2 Adlt. + 2 Child (0 - 8.99)-(0-8.99)
Accm.Type 4	2 Adlt. + 2 Child (0 - 8.99)-(9-11.99)
Accm.Type 5	2 Adlt. + 2 Child (9 - 11.99)-(9-11.99)
Accm.Type 6	3 Adlt.
Accm.Type 7	3 Adlt. + 1 Child (0 - 8,99)
Accm.Type 8	3 Adlt. + 2 Child (0 - 2.99)-(0-8.99)



Accm.Type 9	3 Adlt. + 1 Child (9-11,99)
Accm.Type 10	4 Adlt



Family Room (38 M2)



Accommodation	
Accm.Type 1	2 Adlt.
Accm.Type 2	2 Adlt. + 1 Child (0-8,99)
Accm.Type 3	2 Adlt. + 1 Child (9-11,99)
Accm.Type 4	2 Adlt. + 2 Child (0-8,99)-(0-8,99)
Accm.Type 5	2 Adlt + 2 Child (0-8,99)-(9-11,99)
Accm.Type 6	2 Adlt. + 2 Child (9-11,99)-(9-11,99)
Accm.Type 7	3 Adlt. + 1 Child (0-8,99)
Accm.Type 8	3 Adlt. + 2 Child (0-2,99)-(0-8,99)
Accm.Type 9	3 Adlt. + 1 Child (9-11,99)
Accm.Type 10	4 Adlt.



ACCOMODATION / HOUSEKEEPING

Check/in and Check/out times	: Check-in time: 14.00 clock, Check-out time: 12.00 clock
Room Cleaning	: Daily, between 09:00 - 16:30
Change of towels	: Daily
Change of Bedclothes	: Every 2 days

GUEST FACILITIES / ACTIVITIES

POOLS	Child Pool nearby	Number	Depth	Area	Water Slide	Sunbed Mattres	Sunshade	Towel	Daily Hygiene
Relax Pool	✓	1	140 - 130 cm	400 m2	-	✓	✓	✓	✓
Relax Child Pool	✓	1	40 cm	16 m2	-	✓	✓	✓	✓
Activity Pool	✓	1	140-130 cm	1000 m2	3	✓	✓	✓	✓
Mini Club Pool	✓	1	40 cm	160 m2	1	✓	✓	✓	✓
Aquapark Pool	✓	1	120 cm	168 m2	6	✓	✓	✓	✓
Aquapark Child Pool	✓	1	35-50 cm	196 m2	2	✓	✓	✓	✓

All Purpose Facilities	✓ Whole Day Entertainment	✓ Fitness Room (from 18 years)
	✓ Evening Entertainment	(Sportswear & Sportshoes mandatory)
	✓ 1 Tennis Court (Hard Court)	✓ Turkish Hamam
	✓ Tennis Flood Light (with charge)	✓ Sauna
	✓ Tennis (Rackets & Balls)	✓
	✓ Basketball	✓ Beauty Center (with charge)
	✓ Beach Volleyball	✓ Massage Applications (with charge)
	✓ Table Tennis	✓ Slides (at certain times)
	✓ Dart	✓ Shops
	✓ Boccia	* Boutique
	✓ Archery (16+)	* Hairdresser
	✓ Water Sports (with charge, private provider)	* Leather
	✓ Wind Surf (Licence required, with charge)	* Supermarket
	✓ Amphitheatre	* Gift Shop
	✓ Step / Aerobic	* Photographer
	✓ Minigolf	* Car Rental
	✓ Disko (drinks with charge)	
	✓ Miniclub (4-12 age)	✓ Doctor & Health Service (with charge)
	✓ Children Restaurant & Buffet in Mini Club only lunch	✓ Book Corner
	✓ Children's Playground (rooved over)	✓ Elevator
	✓ Baby-Corner (Microwave, Babybottle-cosy, Mixer)	✓ Currency Exchange
	✓ Pier & Pavillons (01.06 - 15.10)	✓ Laundry Service (with charge)
		✓ Parking

MEETING ROOMS & TECHNICAL EQUIPEMENT

HALLS & SIZES	Width	Length	Area	Height	M2	Centre	Class	Coctail	Banquet	U Shape	Foyer
Meeting Room	15 m	15 m	225 m2	3.5 m	225 m2	-	-	-	-	-	-
TV Room	15 m	15 m	225 m2	3.5 m	225 m2	-	-	-	-	-	-

Note: (Equipment is chargeable)

Equipments	Measurement	Number
1- Projector		2
2- Motorized Fixed Curtain		1
3- DVD Player		2
4- Microphone (cable free)		2
5- Sound System		1
6- Beamer		1
7- Light System		1
8- Lectern		1

RESTAURANTS & BARS

Total Capacity	Open	Closed	Concept Beverage	Open Buffet	A La Carte	Air Condition	Children Menu	Diet Menu	Baby Chair	Reservation	Free of charge	With Charge	Days in a week	Opening Times	Theme
** Main Restaurant	1250														International
Breakfast	✓	✓	✓	✓	✓	✓	✓	✓	✓	✓	✓	✓	7	07:00 - 10:00	
Late Breakfast	✓	✓	✓	✓	✓	✓	✓	✓	✓	✓	✓	✓	7	10:00 - 11:00	
Lunch	✓	✓	✓	✓	✓	✓	✓	✓	✓	✓	✓	✓	7	12:30 - 14:30	
Snack	✓	✓	✓	✓	-	-	-	-	-	-	-	-	7	12:00 - 16:00	
Coffee Break	✓	✓	✓	✓	✓	✓	✓	✓	✓	✓	✓	✓	7	16:00 - 18:00	
Dinner	✓	✓	✓	✓	✓	✓	✓	✓	✓	✓	✓	✓	7	19:00 - 21:00	
Night Soup&Snack	✓	✓	✓	✓	✓	✓	✓	✓	✓	✓	✓	✓	7	23:30 - 02:00	
Early Breakfast	✓	✓	✓	✓	✓	✓	✓	✓	✓	✓	✓	✓	7	02:00 - 07:00	
A la Carte Restaurants	125														
* Fish Restaurant	25	✓	✓	✓	-	-	-	-	-	-	-	-	6	19:30 - 21:30	Fish
* Italian Restaurant	50	✓	✓	✓	✓	-	-	-	-	-	-	-	6	19:30 - 21:30	Italian
* Ottoman Restaurant	50	✓	✓	✓	✓	-	-	-	-	-	-	-	6	19:30 - 21:30	Turkish
Mini Club Restaurant															
Lunch	Miniclub	✓	✓	✓	✓	-	-	-	-	-	-	-	7	12:00 - 13:00	
Dinner	Main Restaurant	✓	✓	✓	✓	-	-	-	-	-	-	-	7	18:30 - 21:00	
Bars															
Relax Bar		✓	✓	✓	-	-	-	-	-	-	-	-	7	10:00 - 16:00	
Green Bar		✓	✓	✓	-	-	-	-	-	-	-	-	7	12:00 - 16:00	
Sultan Köşkü		✓	✓	✓	-	-	-	-	-	-	-	-	7	10:00 - 23:30	
Pool Bar		✓	✓	✓	-	-	-	-	-	-	-	-	7	10:00 - 24:00	
Welcome Bar		✓	✓	✓	-	-	-	-	-	-	-	-	7	10:00 - 24:00	
Disco Bar		✓	✓	✓	-	-	-	-	-	-	-	-	7	24:00 - 02:00	
Aqua Bar		✓	✓	✓	-	-	-	-	-	-	-	-	7	10:00 - 17:30	
Beach bar		✓	✓	✓	-	-	-	-	-	-	-	-	7	10:00 - 16:00	

➔ All alcoholic drinks are not served to under 18 years

➔ **Important Note !!!**
The hotel management reserves the right to short-term changes (eg opening times, relocation of outdoor facilities) due to eg weather conditions, force majeure, customers demands, without prior notice.